

# Thompson Angus



47th Annual Production Sale  
**2025**  
Saturday, January 25

Selling: 76 AI-Sired  
Big, Stout Rancher Bulls

1:30 p.m. CST • At the Ranch  
Located 13.5 miles south of Steele, ND



**6671**

Bulls Guaranteed

**DVAuction**  
Broadcasting Real-Time Auctions

Lunch will be served.



Follow us on Facebook!



**640**

**WELCOME**

# Thompson Angus



Pete & Nancy Thompson  
Callie, Carson, Courtney & Cash

Pete & Nancy Thompson  
Carson Thompson  
5323 26th Ave. SE • Kintyre, ND 58549  
Home: 701-475-2203  
Pete's Cell: 701-391-1838  
Carson's Cell: 701-391-2031



[www.thompsonangus.com](http://www.thompsonangus.com)  
Facebook: Thompson Angus

Welcome!

First of all, we want to thank all our customers who have instilled their trust in our program. We appreciate your continued support.

We're excited to offer another set of high-quality bulls! As we are in the highest calf prices ever, it is a great time to surround yourself with quality Angus genetics. We continue to work hard and offer bulls that have maternal ability and carcass quality to maximize the profits of our customers. We have always demanded our cow herd to be functional and have top maternal traits. We will continue to source and use the top Angus genetics in the breed.

Our herd was established in 1972 with a primary focus on balanced trait selection. This continues today with AI breeding to the top bulls in the industry. The bulls offered in this sale represent the top 30% of our calf crop. As always, the bulls have been culled in May, August, October and December. This ensures only the top bulls make the sale.

You can view the videos of the bulls on DVAuction and on sale day, you can watch and bid live online through DVAuction as well. Contact Logan Hoffman at 701-388-2618 with any questions and to preregister for the sale. We will also be able to take phone bids if you prefer. Please give me a call prior to sale day to get things set up for your phone bids.

Thank you for showing interest in our program. As always, we offer free keep and free delivery in North Dakota and adjoining states after their semen test in April. The bulls are guaranteed 100% to be fertile and carry our breeding guarantee. A replacement will be provided if any problems should occur before September 1.

Thank you,

The Thompsons

**DVAuction**  
Broadcasting Real-Time Auctions

**ANGUSGS**  
Powered by Neogen GeneSeek

## Genomic Testing:

All bulls are genomic tested and parent verified through GeneSeek's Angus-GS test. All EPDs are genomic enhanced. All bulls are free of AM, NH, CA and DD.

## Sale Time:

1:30 p.m. CST

## Auctioneer:

Pius Bitz, Napoleon, ND

## Lunch:

Complimentary lunch served.

## Retained Interest:

All bulls sell 2/3 interest and full possession.

## Directions to Ranch:

13.5 miles south of Steele, ND, or  
8 miles north of Kintyre, ND  
(Please don't use GPS)

## Bulls Guaranteed

## Free Bull Keep:

Until semen tested in April

## Delivery:

Free delivery starts April 1 in  
North Dakota and adjoining states.

## Accommodations:

Cobblestone Inn & Suites  
623 N Mitchell Ave • Steele, ND 58482  
(701) 475-4478 • (888) 693-8262

## Catalog:

Design: Cow Camp Promotions  
Printing: Flash Printing

## Sale Bull Photography:

Callie Thompson

**Thompson Angus**

## 06 TA BADLANDS 2478

ELLINGSON BADLANDS 0285 | ELLINGSON RIDER PRIDE 7282  
EA BELLS GIRL 7617

BT MISS DIANE 06 | R B ACTIVE DUTY 010  
BT MISS DIANE 7800

Reg. #: 21086343  
BD: 2/19/24  
BW: 76  
Act. WW: 827  
205 Wt.: 774  
SC: 37  
365 Wt.: 1338  
Dam WR: 5-100

CED	BW	WW	YW	SC	HP	MK	DOC	CW	MB	REA	SW	SF
14	-1.7	57	99	0.76	13.7	36	10	52	0.31	0.83	68	104
4%	5%	80%	80%	60%	40%	4%	90%	55%	90%	35%	35%	30%

A wide-topped bull with extra depth and thickness. Calving ease and maternal.



Ellingson Badlands 0285, sire

## 060 TA SHOWMAN 2467

SCHIEFELBEIN SHOWMAN 338 | SCHIEFELBEIN ATTRACTIVE 4565  
FROSTY ELBA 3745

WINDCHIME ELBA 0604 | GAFFNEY GAME CHANGER 371  
WINDCHIME ELBA 2504

Reg. #: 21086340  
BD: 1/24/24  
BW: 76  
Act. WW: 905  
205 Wt.: 809  
SC: 40  
365 Wt.: 1451  
Dam WR: 3-110

CED	BW	WW	YW	SC	HP	MK	DOC	CW	MB	REA	SW	SF
10	0.6	75	134	0.65	16.5	34	23	61	0.62	1.24	76	97
25%	35%	30%	25%	70%	15%	10%	35%	35%	60%	4%	15%	45%

Herd sire prospect. Extra long bodied, calving ease bull. High weights and out of a highly productive cow.



060

## 8 TA SHOWMAN 2458

SCHIEFELBEIN SHOWMAN 338 | SCHIEFELBEIN ATTRACTIVE 4565  
FROSTY ELBA 3745

WINDCHIME ROYALTY 8760 | WINDCHIME UP RIVER 5479  
WINDCHIME ROYALTY 5406

Reg. #: 21086341  
BD: 1/26/24  
BW: 74  
Act. WW: 890  
205 Wt.: 784  
SC: 39  
365 Wt.: 1306  
Dam WR: 5-102

CED	BW	WW	YW	SC	HP	MK	DOC	CW	MB	REA	SW	SF
11	-0.8	58	105	0.94	9.0	30	16	46	0.52	0.50	65	84
15%	15%	75%	75%	50%	85%	25%	70%	70%	70%	75%	45%	70%

A little more frame in this big, stout-made bull. Extra bone and length, with calving ease to go with.



8

## 11 TA CRAFTSMAN 2482

CONNELLY CRAFTSMAN | SITZ RESILIENT 10208  
BLACK CATHY OF CONANGA 8521

FLYING V MIGNONNE 11J | TEHAMA PATRIARCH F028  
FLYING V MIGNONNE 59G

Reg. #: 21086344  
BD: 2/21/24  
BW: 77  
Act. WW: 835  
205 Wt.: 823  
SC: 37  
365 Wt.: 1304  
Dam WR: 2-104

CED	BW	WW	YW	SC	HP	MK	DOC	CW	MB	REA	SW	SF
8	0.6	83	150	0.43	18.3	31	28	63	0.87	1.05	88	99
35%	35%	15%	10%	80%	5%	20%	15%	30%	35%	15%	3%	40%

High carcass traits to go along with calving ease and extra muscle in this top prospect.



11

# ANGUS BULLS

## 12 TA RIVERSIDE 2405

VERMILION RIVERSIDE

VERMILION BOMBER G017  
VERMILION EULIMA 0239

Reg. #: 21086345

BD: 2/23/24

BW: 80

Act. WW: 862

205 Wt.: 884

SC: 36

365 Wt.: 1346

Dam WR: 1-113

TA ELBA WIND 12

S A V AMERICA 8018  
WINDCHIME ELBA 7433

CED	BW	WW	YW	SC	HP	MK	DOC	CW	MB	REA	SW	SF
-2	4.8	115	187	1.26	7.9	17	27	95	0.29	1.02	88	128
95%	95%	1%	1%	30%	90%	95%	15%	1%	90%	15%	3%	5%

Performance prospect here. EPDs in the top 1% of the breed. Will sire heavy calves.

## 19 TA JAMESON 2452

BASIN JAMESON 1076

BASIN DEPOSIT 6249  
BASIN JOY 9140

Reg. #: 21086346

BD: 2/29/24

BW: 75

Act. WW: 780

205 Wt.: 753

SC: 38

365 Wt.: 1290

Dam WR: 5-106

FLYING V MYSTERIA PRIDE 19F

K C F BENNETT DIVERSE  
FLYING V MYSTERIA PRIDE 17D

CED	BW	WW	YW	SC	HP	MK	DOC	CW	MB	REA	SW	SF
11	1.7	94	149	1.27	19.1	30	22	66	1.01	0.73	95	88
15%	60%	2%	10%	25%	3%	25%	40%	25%	25%	45%	1%	60%

This high marbling bull has calving ease and top 1% growth numbers. Will leave top replacements also.

## 33 TA PATRIARCH 2479

TEHAMA PATRIARCH F028

S S NIAGARA Z29  
TEHAMA ELITE BLACKBIRD D826

Reg. #: 21086347

BD: 2/18/24

BW: 80

Act. WW: 875

205 Wt.: 817

SC: 39

365 Wt.: 1400

Dam WR: 7-104

FLYING V QUEEN ANITA 33D

MUSGRAVE BIG SKY  
FLYING V QUEEN ANITA 35Z

CED	BW	WW	YW	SC	HP	MK	DOC	CW	MB	REA	SW	SF
13	-0.1	90	164	0.86	15.0	25	18	75	0.57	0.35	78	119
10%	25%	5%	3%	55%	25%	55%	60%	10%	65%	90%	15%	10%

Calving ease and growth in this larger frame, heavy weight bull. Dam is a top producer.



## 42 TA CHEROKEE 2457

KLA CHEROKEE 267

S A V REGARD 4863  
KLA FOREVER LADY 9K

Reg. #: 21086348

BD: 3/28/24

BW: 82

Act. WW: 795

205 Wt.: 872

SC: 38

365 Wt.: 1300

Dam WR: 6-101

BT EBONETTE 42

CONNELLY IMPRESSION  
BT EBONETTE 200

CED	BW	WW	YW	SC	HP	MK	DOC	CW	MB	REA	SW	SF
-1	4.0	76	127	1.51	7.6	23	15	53	0.53	0.79	65	94
95%	95%	25%	35%	15%	95%	70%	70%	55%	70%	40%	45%	50%

Youngest bull in the sale that has extra thickness and quality to leave a top-notch set of calves.

## 45 TA GRATITUDE 2432

SMITH VALLEY GRATITUDE

BUBS SOUTHERN CHARM AA31  
SMITH VALLEY BLACKBIRD 6908

Reg. #: 21086349

BD: 2/14/24

BW: 85

Act. WW: 810

205 Wt.: 749

SC: 40

365 Wt.: 1340

Dam WR: 7-100

BT EDELLA 45

SITZ LOGIC Y46  
BT EDELLA 653

CED	BW	WW	YW	SC	HP	MK	DOC	CW	MB	REA	SW	SF
4	2.6	79	145	1.74	15.5	30	3	66	0.42	0.72	71	108
70%	80%	20%	15%	10%	20%	25%	95%	25%	80%	45%	30%	25%

Long bodied, high maternal prospect here. A clean-made bull with a striking appearance.

## 52 TA GRATITUDE 2481

SMITH VALLEY GRATITUDE

BUBS SOUTHERN CHARM AA31  
SMITH VALLEY BLACKBIRD 6908

Reg. #: 21086350

BD: 2/20/24

BW: 82

Act. WW: 875

205 Wt.: 822

SC: 39

365 Wt.: 1304

Dam WR: 7-97

RAF MISS MORRISON 527

BARSTOW CASH  
RAF MISS MORRISON 901

CED	BW	WW	YW	SC	HP	MK	DOC	CW	MB	REA	SW	SF
6	2.0	78	134	1.21	15.1	25	16	54	0.46	1.05	67	101
55%	70%	20%	25%	30%	25%	55%	70%	50%	80%	15%	35%	35%

Extra bone and muscle in this eye appealing bull.

## 79 TA BIG VALLEY 2469

MARDA BIG VALLEY 172

CONNELLY BIG VALLEY  
MARDA KITTY 425

Reg. #: 21086351

BD: 3/7/24

BW: 92

Act. WW: 765

205 Wt.: 755

SC: 36

365 Wt.: 1347

Dam WR: 3-103

ELBAR OF BT 79

S A V PRESIDENT 6847  
ELBAR OF BT 004

CED	BW	WW	YW	SC	HP	MK	DOC	CW	MB	REA	SW	SF
3	4.7	80	142	0.57	6.2	28	27	48	0.27	0.50	65	78
75%	95%	20%	15%	75%	95%	35%	15%	65%	90%	75%	45%	80%

A long-spined, high volume, good performing bull. His high producing dam has a tight udder.



**LAR Man In Black, sire**

## 95 TA MAN IN BLACK 2455

**LAR MAN IN BLACK** | BAR R JET BLACK 5063  
JMB MAXINE TG 2131

**WINDCHIME BURGESS 6695** | SINCLAIR NET PRESENT VALUE  
WINDCHIME BURGESS 2595

Reg. #: 21086352  
BD: 2/26/24  
BW: 80  
Act. WW: 780  
205 Wt.: 746  
SC: 37  
365 Wt.: 1296  
Dam WR: 6-99

CED	BW	WW	YW	SC	HP	MK	DOC	CW	MB	REA	SW	SF
11	0.9	76	126	0.85	15.4	27	23	59	0.95	0.72	78	94
15%	45%	25%	40%	55%	20%	40%	35%	40%	30%	45%	15%	50%

Calving ease bull that has extra muscle down his top and into his rear quarter. Thick, complete and sound.



**98**

## 98 TA CHEROKEE 2460

**KLA CHEROKEE 267** | S A V REGARD 4863  
KLA FOREVER LADY 9K

**BT PRIMROSE 98** | CONNEALY IMPRESSION  
BT PRIMROSE 220

Reg. #: 21086353  
BD: 2/27/24  
BW: 84  
Act. WW: 820  
205 Wt.: 786  
SC: 37  
365 Wt.: 1310  
Dam WR: 1-100

CED	BW	WW	YW	SC	HP	MK	DOC	CW	MB	REA	SW	SF
3	3.6	70	116	1.09	16.1	26	19	45	0.15	0.87	65	79
75%	95%	40%	55%	40%	15%	50%	55%	75%	95%	30%	45%	75%

High quality bull who is thick from front to back. Will leave top replacement females and steers that weigh.



**118**

## 118 TA CHEROKEE 2439

**KLA CHEROKEE 267** | S A V REGARD 4863  
KLA FOREVER LADY 9K

**T K MADGE H118** | T K STEAMBOAT D307  
T K MADGE RJM 2723

Reg. #: 21086354  
BD: 3/7/24  
BW: 85  
Act. WW: 840  
205 Wt.: 858  
SC: 36  
365 Wt.: 1350  
Dam WR: 2-118

CED	BW	WW	YW	SC	HP	MK	DOC	CW	MB	REA	SW	SF
0	2.3	74	129	0.94	15.1	33	26	50	0.27	0.69	76	81
90%	75%	30%	35%	50%	25%	10%	20%	60%	90%	50%	15%	75%

Herd bull look in this thick, complete-made calf. Brother was highest performing in last year's sale. Out of high ratioing dam.

## 120 TA JAMESON 2420

**BASIN JAMESON 1076** | BASIN DEPOSIT 6249  
BASIN JOY 9140

**FLYING V MISS PRIDE 120E** | V A R GENERATION 2100  
FLYING V MISS PRIDE 27A

Reg. #: 21086355  
BD: 3/7/24  
BW: 90  
Act. WW: 875  
205 Wt.: 864  
SC: 39  
365 Wt.: 1400  
Dam WR: 6-105

CED	BW	WW	YW	SC	HP	MK	DOC	CW	MB	REA	SW	SF
7	2.6	92	155	1.45	14.1	38	26	76	1.04	1.24	95	102
45%	80%	3%	10%	20%	35%	2%	20%	10%	25%	4%	1%	35%

High carcass numbers on this big, powerfully-made bull. Pathfinder dam.

## 124 TA MAN IN BLACK 2475

**LAR MAN IN BLACK** | BAR R JET BLACK 5063  
JMB MAXINE TG 2131

**BT PRIMROSE MIKE 124** | PA SAFEGUARD 021  
BT PRIMROSE MIKE 802

Reg. #: 21086356  
BD: 2/22/24  
BW: 78  
Act. WW: 855  
205 Wt.: 829  
SC: 38  
365 Wt.: 1337  
Dam WR: 7-101

CED	BW	WW	YW	SC	HP	MK	DOC	CW	MB	REA	SW	SF
7	0.5	72	125	1.76	12.5	27	16	60	0.93	0.44	72	96
45%	35%	35%	40%	10%	50%	40%	70%	35%	30%	80%	25%	45%

Calving ease and carcass in this sound, structurely correct bull.

# ANGUS BULLS

## 140 TA BADLANDS 2404

ELLINGSON BADLANDS 0285	ELLINGSON RIDER PRIDE 7282	Reg. #:	21086357
	EA BELLS GIRL 7617	BD:	2/18/24
BT BARBARA 140	POSS MAVERICK	BW:	78
	BT BARBARA 342	Act. WW:	897
		205 Wt.:	852
		SC:	37
		365 Wt.:	1343
		Dam WR:	2-103

CED	BW	WW	YW	SC	HP	MK	DOC	CW	MB	REA	SW	SF
0	4.0	78	139	1.32	16.4	27	30	66	0.63	0.88	61	120
90%	95%	20%	20%	25%	15%	40%	10%	25%	60%	30%	55%	10%

Extra growth in this complete bull. Thick from front to back. Dam is a bigger framed, nicely uddered cow.

## 147 TA CHEROKEE 2419

KLA CHEROKEE 267	S A V REGARD 4863	Reg. #:	21086358
	KLA FOREVER LADY 9K	BD:	3/2/24
BT BONNIE 147	BUSHS EASY DECISION 98	BW:	85
	BT BONNIE 23	Act. WW:	820
		205 Wt.:	796
		SC:	37
		365 Wt.:	1340
		Dam WR:	6-106

CED	BW	WW	YW	SC	HP	MK	DOC	CW	MB	REA	SW	SF
2	2.4	68	121	0.80	17.3	37	20	52	0.21	0.85	69	87
85%	75%	50%	45%	60%	10%	3%	50%	55%	95%	30%	30%	60%

A masculine bull with plenty of muscle and depth of body. Out of one of the top cows in the herd.

## 151 TA BLACK DIAMOND 2423

KRAYE BLACK DIAMOND JK 2208	S A V BLACK DIAMOND 7903	Reg. #:	21086359
	MISS QUEEN JK 8354	BD:	2/20/24
TA MISS EVENTRESS 151	FLECKS LINEBACKER 7051	BW:	80
	RAF MISS EVENTRESS 301	Act. WW:	763
		205 Wt.:	754
		SC:	37
		365 Wt.:	1380
		Dam WR:	2-99

CED	BW	WW	YW	SC	HP	MK	DOC	CW	MB	REA	SW	SF
1	2.7	76	131	1.30	13.8	25	22	66	0.41	0.83	69	111
90%	80%	25%	30%	25%	35%	55%	40%	25%	80%	35%	30%	20%

A husky-made powerhouse – thick from front to back.

## 174 TA MAN IN BLACK 2424

LAR MAN IN BLACK	BAR R JET BLACK 5063	Reg. #:	21086361
	JMB MAXINE TG 2131	BD:	2/16/24
BT ENZORA 174	PA SAFEGUARD 021	BW:	82
	BT ENZORA 932	Act. WW:	807
		205 Wt.:	772
		SC:	40
		365 Wt.:	1295
		Dam WR:	7-105

CED	BW	WW	YW	SC	HP	MK	DOC	CW	MB	REA	SW	SF
12	0.3	71	125	2.31	12.7	33	13	66	1.22	0.43	76	118
10%	30%	40%	40%	1%	50%	10%	80%	25%	15%	80%	15%	15%

One of the highest marbling bulls in the sale. Will sire added pounds and heavy milking daughters.

## 187 TA J RAINMAKER 4172

JANSSEN RAINMAKER	S A V RAINFALL 6846	Reg. #:	20963865
	JANSSEN EMBLYNETTE 4525	BD:	1/20/24
WINDCHIME BURGESS 1872	S A V AMERICA 8018	BW:	85
	WINDCHIME BURGESS 7752	Act. WW:	800
		205 Wt.:	736
		SC:	38
		365 Wt.:	1246
		Dam WR:	2-98

CED	BW	WW	YW	SC	HP	MK	DOC	CW	MB	REA	SW	SF
1	2.3	63	97	1.01	10.3	21	21	38	0.41	1.11	61	77
90%	75%	60%	85%	45%	75%	85%	45%	85%	80%	10%	55%	80%

A larger-framed, calving ease bull with a huge ribeye.

## 195 TA PROLIFIC 2434

ELLINGSON PROLIFIC	ELLINGSON PROFOUND 8155	Reg. #:	21086362
	EA QUEEN 8070	BD:	2/14/24
BT MISS EMULOUS 195	SITZ LOGIC Y46	BW:	90
	BT MISS EMULOUS 563	Act. WW:	757
		205 Wt.:	701
		SC:	37
		365 Wt.:	1270
		Dam WR:	6-99

CED	BW	WW	YW	SC	HP	MK	DOC	CW	MB	REA	SW	SF
-2	3.8	75	127	0.88	15.5	19	16	71	0.37	0.98	63	127
95%	95%	30%	35%	50%	20%	90%	70%	15%	85%	20%	50%	5%

A good performing, bigger boned individual here. Will leave you a top set of feeder cattle.

**DVAuction**  
Broadcasting Real-Time Auctions

Never Miss An Auction Again!  
Watch & Bid online for FREE!

Visit [www.DVAuction.com](http://www.DVAuction.com)  
and Register Today!

For General Questions Please Contact Our Office:  
(402) 316-5460 or support@dvauction.com

## 201 TA GRATITUDE 2440

SMITH VALLEY GRATITUDE	BUBS SOUTHERN CHARM AA31	Reg. #:	21086363
	SMITH VALLEY BLACKBIRD 6908	BD:	2/17/24
TA ROSE ANN 201	PEAK DOT COLOSSAL 98G	BW:	82
	BT ROSE ANNE 269	Act. WW:	812
		205 Wt.:	793
		SC:	38
		365 Wt.:	1340
		Dam WR:	1-101

CED	BW	WW	YW	SC	HP	MK	DOC	CW	MB	REA	SW	SF
7	1.3	78	137	1.27	14.2	32	12	60	0.49	1.03	78	97
45%	50%	20%	20%	25%	35%	15%	85%	35%	75%	15%	15%	45%

Calving ease, growth and a big ribeye all come with this top bull.



## 220 TA PROLIFIC 2468

ELLINGSON PROLIFIC | ELLINGSON PROFOUND 8155  
EA QUEEN 8070  
Reg. #: 21086364  
BD: 2/28/24  
BW: 86  
Act. WW: 905  
BT PRIMROSE 220 | PEAK DOT NO DOUBT 305D  
BT PRIMROSE 220  
205 Wt.: 885  
SC: 38  
365 Wt.: 1498  
Dam WR: 3-102

CED	BW	WW	YW	SC	HP	MK	DOC	CW	MB	REA	SW	SF
-9	6.1	98	166	0.46	11.7	17	24	80	0.25	0.90	65	112
95%	95%	1%	2%	80%	60%	95%	30%	5%	95%	25%	45%	20%

Off the charts growth numbers on this big, gentle bull. Will really add pounds to a calf crop.

## 232 TA RIVERSIDE 2480

VERMILION RIVERSIDE | VERMILION BOMBER G017  
VERMILION EULIMA 0239  
Reg. #: 21086365  
BD: 2/15/24  
BW: 77  
Act. WW: 802  
TA PRIMROSE 232 | HOOVER NO DOUBT  
BT PRIMROSE 233  
205 Wt.: 811  
SC: 38  
365 Wt.: 1360  
Dam WR: 1-103

CED	BW	WW	YW	SC	HP	MK	DOC	CW	MB	REA	SW	SF
3	2.7	87	145	1.24	10.0	24	20	76	0.43	0.51	77	121
75%	80%	10%	15%	30%	75%	65%	50%	10%	80%	75%	15%	10%

A moderate birth weight bull that has plenty of gas in the tank. High numbers and extra pounds come with.

## 251 TA KING AIR 2402

CONNELLY KING AIR 8661 | CONNEALY KING AIR  
NORTHERN LEN OF CONANGA 8661  
Reg. #: 21086366  
BD: 2/8/24  
BW: 78  
Act. WW: 800  
TA DISTINCTION 251 | PEAK DOT COLOSSAL 98G  
BT DISTINCTION 709  
205 Wt.: 765  
SC: 37  
365 Wt.: 1200  
Dam WR: 1-97

CED	BW	WW	YW	SC	HP	MK	DOC	CW	MB	REA	SW	SF
9	2.0	78	135	1.41	15.4	27	15	61	0.43	0.71	73	111
30%	70%	20%	25%	20%	20%	40%	70%	35%	80%	50%	25%	20%

Calving ease bull that is stout from front to back.

## 267 TA PROLIFIC 2441

ELLINGSON PROLIFIC | ELLINGSON PROFOUND 8155  
EA QUEEN 8070  
Reg. #: 21086367  
BD: 2/4/24  
BW: 88  
Act. WW: 892  
BT KYMA 267 | CONNEALY BIG MONEY  
BT KYMA 294  
205 Wt.: 804  
SC: 36  
365 Wt.: 1400  
Dam WR: 6-98

CED	BW	WW	YW	SC	HP	MK	DOC	CW	MB	REA	SW	SF
2	4.2	90	144	0.16	22.2	16	12	72	0.46	0.83	66	114
85%	95%	5%	15%	90%	1%	95%	85%	15%	80%	35%	40%	15%

Large outlined, deep bodied prospect here. Will sire extra pounds and leave top quality replacements. Dam is a stellar producer.

## 283 TA GRATITUDE 2411

SMITH VALLEY GRATITUDE | BUBS SOUTHERN CHARM AA31  
SMITH VALLEY BLACKBIRD 6908  
Reg. #: 21086369  
BD: 2/23/24  
BW: 93  
Act. WW: 885  
BT CHARM 283 | HF TIGER 5T  
BT CHARM 500  
205 Wt.: 861  
SC: 37  
365 Wt.: 1416  
Dam WR: 8-106

CED	BW	WW	YW	SC	HP	MK	DOC	CW	MB	REA	SW	SF
-6	5.3	87	152	1.77	13.8	33	18	71	0.06	0.80	72	110
95%	95%	10%	10%	10%	35%	10%	60%	15%	95%	35%	25%	20%

Thickness abounds in this big, rugged-made bull. Will sire extra pounds. High growth and from a dam who always raises a good one.

## 331 TA BLACK DIAMOND 2463

KRAYE BLACK DIAMOND JK 2208 | S A V BLACK DIAMOND 7903  
MISS QUEEN JK 8354  
Reg. #: 21086371  
BD: 2/21/24  
BW: 86  
Act. WW: 820  
TA ELBA 331 | S A V DOWNPOUR 8794  
BT ELBA 679  
205 Wt.: 810  
SC: 38  
365 Wt.: 1462  
Dam WR: 2-107

CED	BW	WW	YW	SC	HP	MK	DOC	CW	MB	REA	SW	SF
-9	6.2	106	172	1.75	9.0	22	12	101	0.57	0.93	75	137
95%	95%	1%	1%	10%	85%	80%	85%	1%	65%	25%	20%	2%

A top set of growth numbers in this high performing, bigger-boned individual. Deep and easy flushing.

## 403 TA SURPLUS 2435

CONNELLY SURPLUS | BJ SURPASS  
ENTRAYA OF CONANGA 933A  
Reg. #: 21086374  
BD: 2/8/24  
BW: 92  
Act. WW: 820  
RAF MISS BURGESS 403 | CONNEALY EARNAN 076E  
RAF MISS BURGESS 001  
205 Wt.: 769  
SC: 38  
365 Wt.: 1310  
Dam WR: 5-96

CED	BW	WW	YW	SC	HP	MK	DOC	CW	MB	REA	SW	SF
-6	3.4	76	122	0.50	12.9	24	23	52	0.67	0.79	70	84
95%	90%	25%	45%	75%	45%	65%	35%	55%	55%	40%	30%	70%

Moderate birth weight on this long, smooth-made maternal bred bull.

# ANGUS BULLS

## 408 TA PROLIFIC 2431

ELLINGSON PROLIFIC | ELLINGSON PROFOUND 8155  
EA QUEEN 8070  
T K MADGE F408 | TEX PLAYBOOK 5437  
T K MADGE D675

Reg. #: 21086375  
BD: 2/9/24  
BW: 80  
Act. WW: 835  
205 Wt.: 761  
SC: 38  
365 Wt.: 1390  
Dam WR: 4-95

CED	BW	WW	YW	SC	HP	MK	DOC	CW	MB	REA	SW	SF
0	3.4	90	147	1.14	21.4	18	12	73	0.68	0.44	73	112
90%	90%	5%	10%	35%	1%	95%	85%	15%	55%	80%	25%	20%

High performance in this ruggedly made bull. Will add pounds.



## 420 TA MAN IN BLACK 2426

LAR MAN IN BLACK | BAR R JET BLACK 5063  
JMB MAXINE TG 2131  
BT BLANCHE 420 | POSS MAVERICK  
FARVIEW SP BLANCHE 2123

Reg. #: 21086378  
BD: 2/27/24  
BW: 82  
Act. WW: 810  
205 Wt.: 792  
SC: 40  
365 Wt.: 1343  
Dam WR: 3-97

CED	BW	WW	YW	SC	HP	MK	DOC	CW	MB	REA	SW	SF
-2	3.8	80	132	2.60	13.6	36	25	68	1.07	0.48	76	109
95%	95%	20%	30%	1%	40%	4%	25%	20%	20%	75%	15%	25%

Calving ease bull that has high marbling.

## 435 TA GRATITUDE 2453

SMITH VALLEY GRATITUDE | BUBS SOUTHERN CHARM AA31  
SMITH VALLEY BLACKBIRD 6908  
TNT QUEEN RUTH 435 | PINE RIDGE HAMMER S322  
TNT JC DESIGNERS LADY 743

Reg. #: 21086379  
BD: 2/27/24  
BW: 85  
Act. WW: 810  
205 Wt.: 799  
SC: 37  
365 Wt.: 1380  
Dam WR: 4-96

CED	BW	WW	YW	SC	HP	MK	DOC	CW	MB	REA	SW	SF
-4	5.1	81	146	0.46	14.4	29	9	70	0.35	1.03	63	120
95%	95%	15%	15%	80%	30%	30%	90%	20%	85%	15%	50%	10%

High growth in this big ribeyed bull. Extra body length to sire market-topping feeder cattle.

## 410 TA GRATITUDE 2408

SMITH VALLEY GRATITUDE | BUBS SOUTHERN CHARM AA31  
SMITH VALLEY BLACKBIRD 6908  
BT IDENTITY 410 | MUSGRAVE 316 EXCLUSIVE  
ISAAK IDENTITY 752

Reg. #: 21086376  
BD: 2/24/24  
BW: 84  
Act. WW: 810  
205 Wt.: 785  
SC: 35  
365 Wt.: 1293  
Dam WR: 1-100

CED	BW	WW	YW	SC	HP	MK	DOC	CW	MB	REA	SW	SF
1	3.3	72	128	0.83	15.3	35	8	61	0.76	0.92	71	101
90%	90%	35%	35%	55%	25%	10%	95%	35%	45%	25%	30%	35%

A complete, thick-made individual here, will leave excellent replacements with high maternal.

## 418 TA PROLIFIC 2485

ELLINGSON PROLIFIC | ELLINGSON PROFOUND 8155  
EA QUEEN 8070  
BT BONNIE 418 | CONNEALY CADE  
BT BONNIE 370

Reg. #: 21086377  
BD: 2/24/24  
BW: 86  
Act. WW: 975  
205 Wt.: 926  
SC: 38  
365 Wt.: 1480  
Dam WR: 4-112

CED	BW	WW	YW	SC	HP	MK	DOC	CW	MB	REA	SW	SF
-1	4.1	111	173	0.55	10.7	14	20	94	0.43	0.98	86	131
95%	95%	1%	1%	75%	70%	95%	50%	1%	80%	20%	4%	4%

Herd bull prospect with off the chart numbers. Thick and massive from head to tail. Out of a deep, massive, high ratiing cow.

## 421 TA SHOWMAN 4051

SCHIEFELBEIN SHOWMAN 338 | SCHIEFELBEIN ATTRACTIVE 4565  
FROSTY ELBA 3745  
WINDCHIME QUEEN 0421 | WHITESTONE 18-MILLION  
WINDCHIME2 QUEEN 7321

Reg. #: 20963863  
BD: 1/29/24  
BW: 82  
Act. WW: 805  
205 Wt.: 731  
SC: 37  
365 Wt.: 1290  
Dam WR: 3-98

CED	BW	WW	YW	SC	HP	MK	DOC	CW	MB	REA	SW	SF
5	1.2	57	105	0.78	16.6	34	22	44	0.30	0.64	62	82
60%	50%	80%	75%	60%	15%	10%	40%	75%	90%	55%	50%	70%

Calving ease bull who is smooth made and long bodied.

## 462 TA BADLANDS 2454

ELLINGSON BADLANDS 0285 | ELLINGSON RIDER PRIDE 7282  
EA BELLS GIRL 7617  
TA SHONIE 462 | SITZ RLS INDICATOR 10959  
BT SHONIE 599

Reg. #: 21086380  
BD: 3/3/24  
BW: 78  
Act. WW: 720  
205 Wt.: 770  
SC: 38  
365 Wt.: 1190  
Dam WR: 1-98

CED	BW	WW	YW	SC	HP	MK	DOC	CW	MB	REA	SW	SF
10	0.6	76	136	1.23	18.9	32	11	64	0.81	0.55	81	109
25%	35%	25%	25%	30%	4%	15%	85%	30%	40%	70%	10%	25%

Sleep-all-night calving ease here. Thick, square-made bull.



## 472 TA RIVERSIDE 2414

**VERMILION RIVERSIDE** | VERMILION BOMBER G017  
 | VERMILION EULIMA 0239  
**TA EMPRESS 472** | S A V SCALE HOUSE 0845  
 | HF EMPRESS 605

Reg. #: 21086381  
 BD: 2/17/24  
 BW: 80  
 Act. WW: 832  
 205 Wt.: 843  
 SC: 38  
 365 Wt.: 1300  
 Dam WR: 1-107

CED	BW	WW	YW	SC	HP	MK	DOC	CW	MB	REA	\$W	\$F
7	2.1	90	146	1.39	5.4	26	12	75	0.49	0.65	90	111
45%	70%	5%	15%	20%	95%	50%	85%	10%	75%	55%	2%	20%

Calving ease bull with high growth numbers. First-calf dam did an excellent job.

## 502 TA BONAFIDE 2438

**BROOKING BONAFIDE 9049** | BROOKING FIREBRAND 6068  
 | BROOKING BEAUTY 333  
**DIAMOND X PRIMROSE 502** | V A R DISCOVERY 2240  
 | CVA PRIMROSE 3019

Reg. #: 21086382  
 BD: 2/29/24  
 BW: 84  
 Act. WW: 785  
 205 Wt.: 758  
 SC: 37  
 365 Wt.: 1295  
 Dam WR: 6-110

CED	BW	WW	YW	SC	HP	MK	DOC	CW	MB	REA	\$W	\$F
3	2.2	69	124	0.79	9.2	37	1	53	1.10	0.30	70	90
75%	70%	45%	40%	60%	85%	3%	95%	55%	20%	90%	30%	55%

High marbling, deep chested bull. From a high ratioing, no-miss cow.

## 504 TA RIVERSIDE 2462

**VERMILION RIVERSIDE** | VERMILION BOMBER G017  
 | VERMILION EULIMA 0239  
**BT MISS BURGESS 504** | MOHNEN LONG DISTANCE 1639  
 | BT MISS BURGESS 222

Reg. #: 21086383  
 BD: 2/5/24  
 BW: 78  
 Act. WW: 710  
 205 Wt.: 664  
 SC: 37  
 365 Wt.: 1200  
 Dam WR: 8-100

CED	BW	WW	YW	SC	HP	MK	DOC	CW	MB	REA	\$W	\$F
4	1.2	68	119	0.80	8.5	17	21	56	0.23	0.75	52	98
70%	50%	50%	50%	60%	90%	95%	45%	45%	95%	45%	75%	40%

Calving ease bull who is straight topped and long bodied, clean in his lines.

## 518 TA GLORY DAYS 2421

**S A V GLORY DAYS 1832** | S A V AMERICA 8018  
 | S A V MADAME PRIDE 3145  
**BT KYMA 518** | KLC BULLSEYE 420  
 | BT KYMA 294

Reg. #: 21086384  
 BD: 2/8/24  
 BW: 82  
 Act. WW: 785  
 205 Wt.: 715  
 SC: 38  
 365 Wt.: 1300  
 Dam WR: 3-98

CED	BW	WW	YW	SC	HP	MK	DOC	CW	MB	REA	\$W	\$F
5	1.6	56	88	0.88	9.3	29	24	37	0.37	0.53	61	79
60%	60%	80%	90%	50%	85%	30%	30%	90%	85%	70%	55%	75%

Calving ease bull that has a little more frame to him. Long bodied, fault-free individual.



## 541 TA PROLIFIC 2477

**ELLINGSON PROLIFIC** | ELLINGSON PROFOUND 8155  
 | EA QUEEN 8070  
**WINDCHIME ROSE 5410** | WERNER WAR PARTY 2417  
 | WINDCHIME2 ROSE 7329

Reg. #: 21086385  
 BD: 2/9/24  
 BW: 85  
 Act. WW: 830  
 205 Wt.: 757  
 SC: 39  
 365 Wt.: 1400  
 Dam WR: 8-101

CED	BW	WW	YW	SC	HP	MK	DOC	CW	MB	REA	\$W	\$F
2	2.2	80	137	0.82	17.2	27	25	79	0.79	0.70	77	115
85%	70%	20%	20%	55%	10%	40%	25%	10%	45%	50%	15%	15%

Extra stout, long bodied powerhouse here. Dam has raised several high selling bulls in past sales.



## 550 TA SURPLUS 2446

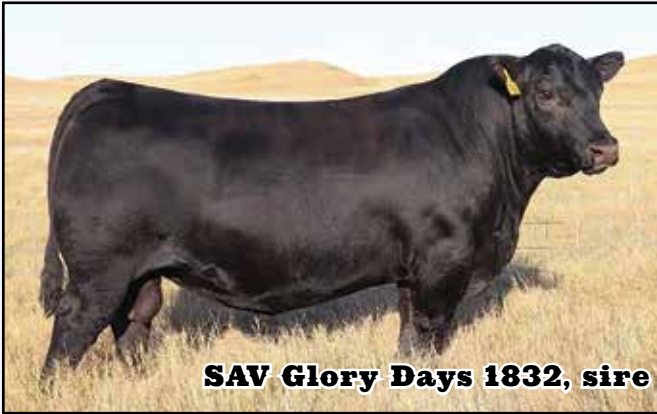
**CONNELLY SURPLUS** | BJ SURPASS  
 | ENTRAYA OF CONANGA 933A  
**BT ELBAR OF KIN 550** | PEAK DOT NO DOUBT 305D  
 | BT ELBAR OF KIN 160

Reg. #: 21086386  
 BD: 2/19/24  
 BW: 80  
 Act. WW: 962  
 205 Wt.: 915  
 SC: 38  
 365 Wt.: 1410  
 Dam WR: 3-100

CED	BW	WW	YW	SC	HP	MK	DOC	CW	MB	REA	\$W	\$F
0	2.3	83	137	1.77	10.5	24	30	56	0.39	0.85	79	83
90%	75%	15%	20%	10%	75%	65%	10%	45%	85%	30%	15%	70%

Herd bull prospect. Thick-made bull that is sound and functional. Complete made.

# ANGUS BULLS



**SAV Glory Days 1832, sire**

## 551 TA GLORY DAYS 2484

S A V GLORY DAYS 1832

S A V AMERICA 8018  
S A V MADAME PRIDE 3145

Reg. #: 21086387

BD: 2/5/24

BW: 80

Act. WW: 862

205 Wt.: 778

SC: 36

365 Wt.: 1330

Dam WR: 5-103

VERMILION LJ LASS 7040

SITZ JLS GAME DAY 9630  
VERMILION LJ LASS 5167

CED	BW	WW	YW	SC	HP	MK	DOC	CW	MB	REA	SW	SF
7	2.2	66	120	-0.37	7.9	16	36	54	0.18	0.68	51	103
45%	70%	55%	50%	95%	90%	95%	1%	50%	95%	50%	80%	30%

A gentle, deep-sided, well balanced bull. Dam is highly productive.



**556**

## 556 TA SHOWMAN 4736

SCHIEFELBEIN SHOWMAN 338

SCHIEFELBEIN ATTRACTIVE 4565  
FROSTY ELBA 3745

Reg. #: 20963861

BD: 1/5/24

BW: 98

Act. WW: 925

205 Wt.: 810

SC: 41

365 Wt.: 1514

Dam WR: 9-104

WINDCHIME BLACKBIRD K 4556

WINDCHIME WAR PARTY 2479  
WINDCHIME2 BLACKBIRD K 1256

CED	BW	WW	YW	SC	HP	MK	DOC	CW	MB	REA	SW	SF
-1	4.4	78	131	0.39	14.9	32	26	74	0.01	1.14	70	112
95%	95%	20%	30%	85%	25%	15%	20%	15%	95%	10%	30%	20%

Herd bull prospect. This heavy weight champion has a huge ribeye to go along with his stout appearance.



**Ellingson Profound 8155, MGS**

## 591 TA PROFOUND 2442

PEAK DOT PROFOUND 710J

ELLINGSON PROFOUND 8155  
HEROINE OF PEAK DOT 225Z

Reg. #: 21086389

BD: 2/21/24

BW: 84

Act. WW: 860

205 Wt.: 847

SC: 39

365 Wt.: 1390

Dam WR: 2-107

TA BLACKBIRD 591

T/D CAVALRY 8301  
ISAAK BLACKBIRD 6097

CED	BW	WW	YW	SC	HP	MK	DOC	CW	MB	REA	SW	SF
-5	3.9	85	137	0.49	15.4	22	10	75	0.86	0.99	69	121
95%	95%	10%	20%	80%	20%	80%	90%	10%	35%	20%	30%	10%

High numbers across the board on this extra marbling, flashy bull. Will sire top-notch steers and heifers.



**640**

## 640 TA RIVERSIDE 2415

VERMILION RIVERSIDE

VERMILION BOMBER G017  
VERMILION EULIMA 0239

Reg. #: 21086390

BD: 2/22/24

BW: 85

Act. WW: 1005

205 Wt.: 963

SC: 39

365 Wt.: 1500

Dam WR: 3-106

BT BARB 640

BROOKING ALL BUSINESS 8035  
BT BARB 647

CED	BW	WW	YW	SC	HP	MK	DOC	CW	MB	REA	SW	SF
-3	4.0	116	194	0.99	16.5	18	24	100	0.34	0.65	87	145
95%	95%	1%	1%	45%	15%	95%	30%	1%	90%	55%	3%	1%

Extra mass and pounds in this herd sire prospect. Top 1% growth from a high producing cow.

## 649 TA RIVERSIDE 2412

VERMILION RIVERSIDE | VERMILION BOMBER G017  
 VERMILION EULIMA 0239  
 BT BARB 649 | ELLINGSON ROUGHRIDER 4202  
 BT BARB 552

Reg. #: 21086391  
 BD: 2/7/24  
 BW: 85  
 Act. WW: 922  
 205 Wt.: 836  
 SC: 38  
 365 Wt.: 1480  
 Dam WR: 2-106

CED	BW	WW	YW	SC	HP	MK	DOC	CW	MB	REA	SW	SF
-1	3.1	81	137	0.86	12.7	25	11	63	0.42	0.42	75	101
95%	85%	15%	20%	55%	50%	55%	85%	30%	80%	85%	20%	35%

Extra stout herd sire prospect. A thick, wide-tracking beef bull.



Vermillion Riverside, sire



670



671 this summer

Thompson Angus

## 655 TA MAN IN BLACK 2466

LAR MAN IN BLACK | BAR R JET BLACK 5063  
 JMB MAXINE TG 2131  
 BT ELBA 655 | S A V BLACKSMITH 2815  
 BT ELBA 152

Reg. #: 21086392  
 BD: 2/11/24  
 BW: 80  
 Act. WW: 855  
 205 Wt.: 783  
 SC: 40  
 365 Wt.: 1398  
 Dam WR: 7-98

CED	BW	WW	YW	SC	HP	MK	DOC	CW	MB	REA	SW	SF
4	4.2	99	159	1.40	13.0	24	16	81	0.66	0.92	86	118
70%	95%	1%	4%	20%	45%	65%	70%	5%	55%	25%	4%	15%

Good carcass and top of the breed growth figures come with this smooth-made bull. Dam has a nice udder.

## 662 TA RIVERSIDE 2448

VERMILION RIVERSIDE | VERMILION BOMBER G017  
 VERMILION EULIMA 0239  
 TA PRIMROSE LADY 662 | JANSSEN DOW JONES 0005  
 BT PRIMROSE LADY 830

Reg. #: 21086393  
 BD: 2/12/24  
 BW: 80  
 Act. WW: 850  
 205 Wt.: 849  
 SC: 35  
 365 Wt.: 1329  
 Dam WR: 1-108

CED	BW	WW	YW	SC	HP	MK	DOC	CW	MB	REA	SW	SF
3	4.0	94	160	1.08	8.7	24	24	86	0.04	0.49	80	129
75%	95%	2%	4%	40%	85%	65%	30%	3%	95%	75%	10%	4%

A long stretchy bull that is deep-made. High ratioing with top growth figures.

## 670 TA SHOWMAN 2403

SCHIEFELBEIN SHOWMAN 338 | SCHIEFELBEIN ATTRACTIVE 4565  
 FROSTY ELBA 3745  
 WINDCHIME ERALDA 6706 | ELLINGSON DOMINANCE 2079  
 WINDCHIME ERALDA 4606

Reg. #: 21086394  
 BD: 1/30/24  
 BW: 80  
 Act. WW: 920  
 205 Wt.: 818  
 SC: 37  
 365 Wt.: 1400  
 Dam WR: 7-104

CED	BW	WW	YW	SC	HP	MK	DOC	CW	MB	REA	SW	SF
7	1.3	73	133	0.53	16.7	26	35	63	0.60	0.85	68	104
45%	50%	35%	25%	75%	15%	50%	1%	30%	65%	30%	35%	30%

Extra thick-made calving ease herd sire prospect. Deep and thick from a phenomenal producer.

## 671 TA CHEROKEE 2413

KLA CHEROKEE 267 | S A V REGARD 4863  
 KLA FOREVER LADY 9K  
 TA FORTRES 671 | STYLES EASY DECISION Y809  
 BT FORTRESS 402

Reg. #: 21086395  
 BD: 2/17/24  
 BW: 86  
 Act. WW: 816  
 205 Wt.: 797  
 SC: 37  
 365 Wt.: 1358  
 Dam WR: 2-98

CED	BW	WW	YW	SC	HP	MK	DOC	CW	MB	REA	SW	SF
1	2.9	81	131	0.74	16.1	27	22	59	0.58	0.89	77	97
90%	85%	15%	30%	60%	15%	40%	40%	40%	65%	25%	15%	45%

Extra thickness and rib in this eye catching bull. Will sire top-notch steers and replacement females.

# ANGUS BULLS



## 735 TA PROLIFIC 2427

ELLINGSON PROLIFIC

ELLINGSON PROFOUND 8155  
EA QUEEN 8070

Reg. #: 21086397

BD: 2/10/24

BW: 86

Act. WW: 880

205 Wt.: 805

SC: 38

365 Wt.: 1390

Dam WR: 4-105

RAF MISS ELBA 735

S A V RECHARGE 3436  
BT ELBA 188

CED	BW	WW	YW	SC	HP	MK	DOC	CW	MB	REA	SW	SF
2	3.3	78	120	0.98	18.4	21	17	60	0.24	0.60	75	92
85%	90%	20%	50%	45%	5%	85%	65%	35%	95%	60%	20%	50%

Extra muscle expression in this straight topped performance prospect. Structurally correct, well-balanced bull.

## 738 TA PROLIFIC 2429

ELLINGSON PROLIFIC

ELLINGSON PROFOUND 8155  
EA QUEEN 8070

Reg. #: 21086398

BD: 2/17/24

BW: 92

Act. WW: 820

205 Wt.: 765

SC: 37

365 Wt.: 1300

Dam WR: 3-94

RAF MISS ELBA 738

S A V SEEDSTOCK 4838  
BT ELBA 188

CED	BW	WW	YW	SC	HP	MK	DOC	CW	MB	REA	SW	SF
1	3.7	78	125	0.20	22.2	16	17	59	0.20	0.56	59	98
90%	95%	20%	40%	90%	1%	95%	65%	40%	95%	65%	60%	40%

Moderate birth with plenty of growth, thick and attractive. Out of a deep, massive, easy fleshing cow.

## 742 TA MAN IN BLACK 2444

LAR MAN IN BLACK

BAR R JET BLACK 5063  
JMB MAXINE TG 2131

Reg. #: 21086399

BD: 2/19/24

BW: 80

Act. WW: 903

205 Wt.: 845

SC: 39

365 Wt.: 1420

Dam WR: 6-102

WINDCHIME BURGESS 7429

WINDCHIME UP RIVER 5479  
WINDCHIME BURGESS 7259

CED	BW	WW	YW	SC	HP	MK	DOC	CW	MB	REA	SW	SF
9	2.3	82	136	1.19	7.8	25	20	79	0.92	0.50	75	118
30%	75%	15%	25%	30%	90%	55%	50%	10%	30%	75%	20%	15%

Extra marbling in this deep bodied herd bull prospect. Will sire extra pounds and performance.

## 749 TA PROLIFIC 2474

ELLINGSON PROLIFIC

ELLINGSON PROFOUND 8155  
EA QUEEN 8070

Reg. #: 21086401

BD: 2/4/24

BW: 80

Act. WW: 975

205 Wt.: 877

SC: 40

365 Wt.: 1440

Dam WR: 3-103

BT PRAIRIE QUEEN 749

KOUPALS B&B CANNON 5030  
BT PRAIRIE QUEEN 7400

CED	BW	WW	YW	SC	HP	MK	DOC	CW	MB	REA	SW	SF
-1	3.3	93	151	1.91	18.4	26	26	78	0.39	0.94	86	116
95%	90%	3%	10%	4%	5%	50%	20%	10%	85%	25%	4%	15%

Herd bull prospect in this thick, wide tracking powerhouse. Has that herd bull look and off the chart growth numbers.

## 752 TA MAN IN BLACK 2416

LAR MAN IN BLACK	BAR R JET BLACK 5063	Reg. #:	21086402
	JMB MAXINE TG 2131	BD:	2/17/24
ISAAK IDENTITY 752	KOUPALS B&B IDENTITY	BW:	90
	ISAAK BLACKBIRD 132	Act. WW:	990
		205 Wt.:	921
		SC:	38
		365 Wt.:	1435
		Dam WR:	4-106

CED	BW	WW	YW	SC	HP	MK	DOC	CW	MB	REA	SW	SF
0	3.7	90	156	0.38	9.3	28	14	83	0.82	0.74	80	116
90%	95%	5%	5%	85%	85%	35%	75%	4%	40%	45%	10%	15%

A big middled beef bull. Long made with one of our top weaning weights. Dam is a high rationing cow.



## 754 TA RIVERSIDE 2430

VERMILION RIVERSIDE	VERMILION BOMBER G017	Reg. #:	21086403
	VERMILION EULIMA 0239	BD:	2/15/24
BT BLACKBIRD 754	EXAR DENVER 2002B	BW:	76
	EBONY HILLS BLACKBIRD 202	Act. WW:	854
		205 Wt.:	812
		SC:	36
		365 Wt.:	1295
		Dam WR:	7-102

CED	BW	WW	YW	SC	HP	MK	DOC	CW	MB	REA	SW	SF
11	0.4	83	139	-0.64	9.8	18	15	60	0.37	1.11	73	95
15%	30%	15%	20%	95%	80%	95%	70%	35%	85%	10%	25%	45%

A calving ease bull with extra performance to sire top feeder cattle. Dam has raised a top selling bull in a past sale.

## 755 TA PACIFIC 4155

STERLING PACIFIC 904	HOOVER NO DOUBT	Reg. #:	20963859
	BALDRIDGE ISABEL B082	BD:	1/17/24
WINDCHIME LADY 1755	S A V RAINFALL 6846	BW:	73
	WINDCHIME LADY 5655	Act. WW:	940
		205 Wt.:	850
		SC:	37
		365 Wt.:	1310
		Dam WR:	2-109

CED	BW	WW	YW	SC	HP	MK	DOC	CW	MB	REA	SW	SF
9	1.8	80	132	0.57	8.4	8	29	75	0.72	1.02	56	126
30%	65%	20%	30%	75%	90%	95%	10%	10%	50%	15%	65%	10%

Calving ease in this extra deep bodied, heavy bull. High rationing cow is thick and easy fleshing with a nice udder.

## 764 TA PROLIFIC 2473

ELLINGSON PROLIFIC	ELLINGSON PROFOUND 8155	Reg. #:	21086404
	EA QUEEN 8070	BD:	2/13/24
BT ELBA 764	YOUNG DALE ZUBAN 34Z	BW:	84
	BT ELBA 471	Act. WW:	847
		205 Wt.:	802
		SC:	36
		365 Wt.:	1400
		Dam WR:	7-100

CED	BW	WW	YW	SC	HP	MK	DOC	CW	MB	REA	SW	SF
-13	5.8	85	142	0.11	18.6	21	27	59	0.19	0.83	64	87
95%	95%	10%	15%	95%	4%	85%	15%	40%	95%	35%	45%	60%

A large outline extra performance type bull. Will sire added pounds to your calf crop.

## 784 TA GLORY DAYS 2406

S A V GLORY DAYS 1832	S A V AMERICA 8018	Reg. #:	21086405
	S A V MADAME PRIDE 3145	BD:	2/10/24
BT KYMA 784	YOUNG DALE ZUBAN 34Z	BW:	82
	BT KYMA 311	Act. WW:	902
		205 Wt.:	846
		SC:	38
		365 Wt.:	1390
		Dam WR:	7-97

CED	BW	WW	YW	SC	HP	MK	DOC	CW	MB	REA	SW	SF
1	3.5	88	141	0.74	4.7	17	27	63	0.33	0.89	67	99
90%	90%	10%	20%	60%	95%	95%	15%	30%	90%	25%	35%	40%

High weaning weight on this herd bull prospect. Thick from front to back and square made.

## 809 TA RESILIENT 4127

SITZ RESILIENT 10208	SITZ STELLAR 726D	Reg. #:	20963864
	SITZ MISS BURGESS 1856	BD:	1/14/24
WINDCHIME BURGESS 1809	WINDCHIME WAR PARTY 6410	BW:	89
	WINDCHIME BURGESS 6709	Act. WW:	920
		205 Wt.:	831
		SC:	37
		365 Wt.:	1290
		Dam WR:	2-102

CED	BW	WW	YW	SC	HP	MK	DOC	CW	MB	REA	SW	SF
3	2.1	74	124	1.17	17.6	33	13	48	0.57	0.68	83	82
75%	70%	30%	40%	35%	10%	10%	80%	65%	65%	50%	10%	70%

A calving ease bull that got up and grew. Well balanced from front to back. Nice head.

## 819 TA BIG GULP 2437

GA BIG GULP 711	DL WHEELHOUSE 409	Reg. #:	21086406
	DL PRINCESS 1695	BD:	3/3/24
BT ELBAR 819	CONNEALY FORTUNE 752L	BW:	90
	BT ELBAR 822	Act. WW:	825
		205 Wt.:	804
		SC:	36
		365 Wt.:	1398
		Dam WR:	2-100

CED	BW	WW	YW	SC	HP	MK	DOC	CW	MB	REA	SW	SF
-5	6.4	103	176	0.48	14.3	15	26	76	0.40	0.26	56	111
95%	95%	1%	1%	80%	30%	95%	20%	10%	85%	95%	65%	20%

Big, massive powerhouse here. Off the chart growth figures, will sire high dollar feeder calves.

# ANGUS BULLS

## 829 TA BADLANDS 2449

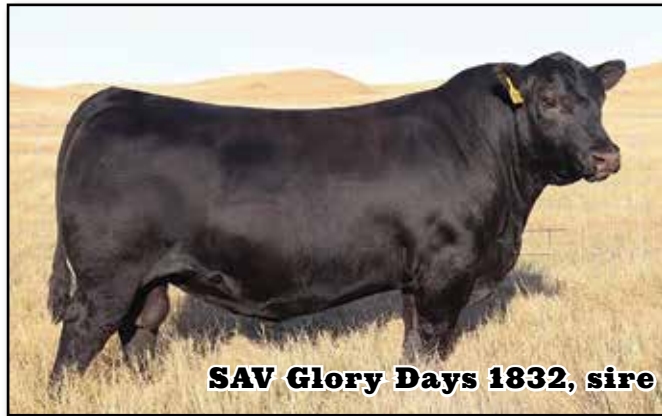
ELLINGSON BADLANDS 0285 | ELLINGSON RIDER PRIDE 7282  
EA BELLS GIRL 7617

ISAAK IDENTITY 829 | KOUPALS B&B IDENTITY  
ISAAK BLACKBIRD 699

Reg. #: 21086407  
BD: 2/13/24  
BW: 74  
Act. WW: 742  
205 Wt.: 684  
SC: 36  
365 Wt.: 1200  
Dam WR: 4-92

CED	BW	WW	YW	SC	HP	MK	DOC	CW	MB	REA	\$W	\$F
9	-1.3	57	98	0.35	18.0	30	5	52	0.47	0.64	65	107
30%	10%	80%	85%	85%	10%	25%	95%	55%	75%	55%	45%	25%

Calving ease in this long-bodied, smooth-made bull.



SAV Glory Days 1832, sire



875

## 879 TA RIVERSIDE 2450

VERMILION RIVERSIDE | VERMILION BOMBER G017  
VERMILION EULIMA 0239

BT BONNIE 879 | TEHAMA TAHOE B767  
BT BONNIE 307

Reg. #: 21086410  
BD: 2/1/24  
BW: 76  
Act. WW: 905  
205 Wt.: 808  
SC: 39  
365 Wt.: 1360  
Dam WR: 3-107

CED	BW	WW	YW	SC	HP	MK	DOC	CW	MB	REA	\$W	\$F
10	0.7	78	127	0.53	11.0	26	28	53	0.52	0.69	82	92
25%	40%	20%	35%	75%	70%	50%	15%	55%	70%	50%	10%	50%

Calving ease herd bull prospect that is long and thick. From a high milking dam.

## 841 TA PROFOUND 2459

PEAK DOT PROFOUND 710J | ELLINGSON PROFOUND 8155  
HEROINE OF PEAK DOT 225Z

TA PRIMROSE 841 | E&B PLUS ONE  
BT PRIMROSE 439

Reg. #: 21086408  
BD: 2/14/24  
BW: 90  
Act. WW: 727  
205 Wt.: 710  
SC: 36  
365 Wt.: 1291  
Dam WR: 2-96

CED	BW	WW	YW	SC	HP	MK	DOC	CW	MB	REA	\$W	\$F
1	3.7	67	118	1.22	11.7	19	16	55	0.86	0.50	46	100
90%	95%	50%	50%	30%	60%	90%	70%	50%	35%	75%	90%	35%

A husky, stout-made bull. Correct in his lines with an attractive look.

## 849 TA GLORY DAYS 2443

S A V GLORY DAYS 1832 | S A V AMERICA 8018  
S A V MADAME PRIDE 3145

BT EMMA 849 | PEAK DOT NO DOUBT 305D  
BT EMMA 906

Reg. #: 21086409  
BD: 2/4/24  
BW: 83  
Act. WW: 740  
205 Wt.: 668  
SC: 37  
365 Wt.: 1300  
Dam WR: 3-91

CED	BW	WW	YW	SC	HP	MK	DOC	CW	MB	REA	\$W	\$F
5	3.2	58	120	-0.07	6.6	22	27	42	0.61	0.90	39	96
60%	90%	75%	50%	95%	95%	80%	15%	80%	65%	25%	95%	45%

A square hip on this powerful, eye-catching bull. Deep bodied from a cow that is massive in her design.

## 875 TA STELLAR 4075

SITZ STELLAR 726D | MOHLEN SUBSTANTIAL 272  
SITZ PRIDE 200B

WINDCHIME ERICA 0875 | WINDCHIME FORESIGHT 278G  
WINDCHIME ERICA 7475

Reg. #: 20963860  
BD: 1/9/24  
BW: 88  
Act. WW: 970  
205 Wt.: 844  
SC: 39  
365 Wt.: 1388  
Dam WR: 3-107

CED	BW	WW	YW	SC	HP	MK	DOC	CW	MB	REA	\$W	\$F
6	1.3	84	152	0.79	11.1	25	27	69	0.79	0.02	73	110
55%	50%	10%	10%	60%	65%	55%	15%	20%	45%	95%	25%	20%

A moderate birth weight in this larger framed, heavy bull. Will sire extra pounds.

## 900 TA GROWTH FUND 2451

HCC GROWTH FUND 0660 | DEER VALLEY GROWTH FUND  
H C C LUCY 0271-0944

BT QUEEN RUTH 900 | PEAK DOT NO DOUBT 305D  
BT QUEEN RUTH 76

Reg. #: 21086411  
BD: 3/6/24  
BW: 90  
Act. WW: 745  
205 Wt.: 748  
SC: 36  
365 Wt.: 1280  
Dam WR: 3-102

CED	BW	WW	YW	SC	HP	MK	DOC	CW	MB	REA	\$W	\$F
3	2.4	73	127	0.92	10.6	19	26	50	0.88	0.52	56	86
75%	75%	35%	35%	50%	70%	90%	20%	60%	35%	70%	65%	65%

A moderate, deep, thick-made bull. Will sire added length and pounds.

## 930 TA QUALITY 2422

FAR QUALITY 0245	KR QUALITY 8525 FAR PRINCESS 204D	Reg. #:	21086412
		BD:	3/15/24
BT BLACKCAP 930	S RESOURCE 815 SANDPOINT BLACKCAP 2677	BW:	90
		Act. WW:	790
		205 Wt:	817
		SC:	36
		365 Wt:	1309
		Dam WR:	2-100

CED	BW	WW	YW	SC	HP	MK	DOC	CW	MB	REA	SW	SF
2	3.8	86	150	1.52	12.8	27	25	61	0.61	0.92	74	98
85%	95%	10%	10%	15%	50%	40%	25%	35%	65%	25%	20%	40%

Extra thickness from head to back in this big ribeye bull. Extra muscle expression and performance.

## 973 TA GRATITUDE 2471

SMITH VALLEY GRATITUDE	BUBS SOUTHERN CHARM AA31 SMITH VALLEY BLACKBIRD 6908	Reg. #:	21086415
		BD:	2/21/24
WINDCHIME LADY 9733	WINDCHIME UP RIVER 5479 WINDCHIME LADY 4633	BW:	82
		Act. WW:	795
		205 Wt:	749
		SC:	38
		365 Wt:	1320
		Dam WR:	4-101

CED	BW	WW	YW	SC	HP	MK	DOC	CW	MB	REA	SW	SF
8	1.1	65	114	2.16	12.8	26	15	49	0.40	0.90	62	86
35%	45%	55%	60%	2%	50%	50%	70%	65%	85%	25%	50%	65%

Calving ease in this long, straight topped, attractive bull. Will sire extra length.

## 2045 TA BIZZ 2470

KR BIZZ 2113	T/D DOC RYAN 049 KR MISS ALLIANCE 8917F	Reg. #:	21099313
		BD:	2/2/24
KR MISS EMULOUS 2045	EZAR STEP UP 9178 KR MISS EMULOUS 5669	BW:	78
		Act. WW:	743
		205 Wt:	735
		SC:	35
		365 Wt:	1285
		Dam WR:	1-94

CED	BW	WW	YW	SC	HP	MK	DOC	CW	MB	REA	SW	SF
4	1.0	82	139	0.44	14.2	34	21	68	0.57	1.09	84	112
70%	45%	15%	20%	80%	35%	10%	45%	20%	65%	10%	5%	20%

Moderate framed, calving ease bull with a small head. Large ribeye bull that will sire extra muscle.

## 4122 TA RIVERSIDE 2410

VERMILION RIVERSIDE	VERMILION BOMBER G017 VERMILION EULIMA 0239	Reg. #:	21086416
		BD:	2/20/24
IDEAL 4122 OF RES BLKBRD	S A V RESOURCE 1441 IDEAL 4363 OF OT26 2574	BW:	82
		Act. WW:	835
		205 Wt:	806
		SC:	37
		365 Wt:	1306
		Dam WR:	8-105

CED	BW	WW	YW	SC	HP	MK	DOC	CW	MB	REA	SW	SF
3	2.2	87	149	0.62	16.4	23	20	74	0.18	1.17	75	119
75%	70%	10%	10%	70%	15%	70%	50%	15%	95%	10%	20%	10%

Huge ribeye in this extra thick-made bull. Will sire market-topping feeder cattle. Dam is a high rationing donor cow.

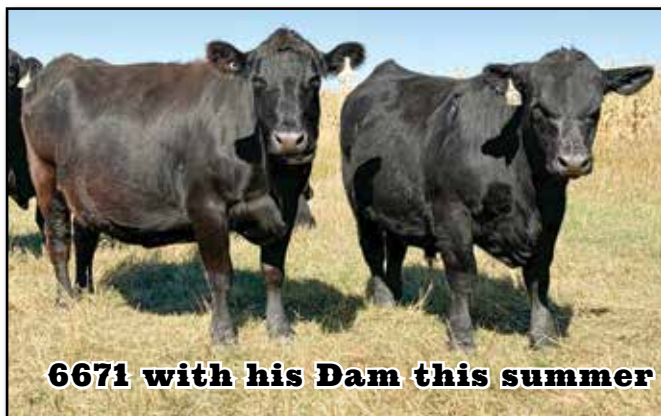


## 6671 TA DOMAIN 2445

SITZ DOMAIN 12371	SITZ LOGO 8148 SITZ EMMA E 129	Reg. #:	21086418
		BD:	2/12/24
REAGANS BM FOREVER LADY 6671	KG JUSTIFIED 3023 REAGANS FOREVER LADY 2034	BW:	78
		Act. WW:	1005
		205 Wt:	922
		SC:	38
		365 Wt:	1490
		Dam WR:	7-109

CED	BW	WW	YW	SC	HP	MK	DOC	CW	MB	REA	SW	SF
11	0.4	85	156	1.94	13.6	43	18	65	0.96	0.59	95	89
15%	30%	10%	5%	4%	40%	1%	60%	25%	30%	65%	1%	60%

Heavy weight champion in this herd bull prospect. Calving ease, growth, maternal and carcass traits all are top-notch. Dam is a high rationing donor.



# ANGUS BULLS

## 7709 TA PROFOUND 2425

PEAK DOT PROFOUND 710J | ELLINGSON PROFOUND 8155  
HEROINE OF PEAK DOT 225Z

JLS BLACKCLASS 7709 | S A V RESOURCE 1441  
JLS BLACKCLASS 2709

Reg. #: 21086419  
BD: 3/19/24  
BW: 90  
Act. WW: 810  
205 Wt.: 835  
SC: 35  
365 Wt.: 1240  
Dam WR: 4-108

CED	BW	WW	YW	SC	HP	MK	DOC	CW	MB	REA	\$W	\$F
-2	5.0	92	151	0.88	16.9	18	19	66	0.43	0.44	69	97
95%	95%	3%	10%	50%	10%	95%	55%	25%	80%	80%	30%	45%

A big, wide top on this long, thick-made bull. Big numbers to sire market-topping feeder cattle.

## 8809 TA MAN IN BLACK 2456

LAR MAN IN BLACK | BAR R JET BLACK 5063  
JMB MAXINE TG 2131

2XL ERICA 8809 | BALDRIDGE COLONEL C251  
ERICA OF ELLSTON M231

Reg. #: 21086420  
BD: 3/4/24  
BW: 82  
Act. WW: 785  
205 Wt.: 767  
SC: 37  
365 Wt.: 1300  
Dam WR: 4-106

CED	BW	WW	YW	SC	HP	MK	DOC	CW	MB	REA	\$W	\$F
3	4.8	99	168	0.76	11.4	30	15	79	0.69	0.46	82	107
75%	95%	1%	2%	60%	65%	25%	70%	10%	55%	80%	10%	25%

Top of the charts growth figures on this complete-made prospect. Long and thick from a high ratioing cow.

## THOMPSON ANGUS WILL BE OFFERING 120 HEAD OF REPLACEMENT HEIFERS

We will be selling 120 head of open Angus heifer calves on Thursday, February 6, 2025, at Napoleon Livestock. The heifers come right from the heart of our herd! They have been Bangs vaccinated and checked open and breedable. They are maternally bred with bloodlines from Sitz, Connealy and SAV genetics.





# REFERENCE SIRE

## A ELLINGSON PROLIFIC

ELLINGSON PROFOUND 8155 | S POWERPOINT WS 5503  
EA ROSETTA 6157  
EA QUEEN 8070 | KOUPAL JUNEAU 797  
EA QUEEN 2350

Reg. #: 20136857  
BD: 3/1/21

CED	BW	WW	YW	SC	HP	MK	DOC	CW	MB	REA	\$W	\$F
1	3.9	89	145	0.88	19.7	15	20	82	0.63	0.67	67	124

## C SMITH VALLEY GRATITUDE

BUBS SOUTHERN CHARM AA31 | SILVEIRAS CONVERSION 8064  
HICKORY HILL ERICA 009  
SMITH VALLEY BLACKBIRD 6908 | QUAKER HILL RAMPAGE 0A36  
V A R BLACKBIRD 1218

Reg. #: 19469208  
BD: 1/15/19

CED	BW	WW	YW	SC	HP	MK	DOC	CW	MB	REA	\$W	\$F
1	4.1	82	143	1.64	14.6	30	11	50	0.35	1.39	72	105

## E ELLINGSON BADLANDS 0285

ELLINGSON RIDER PRIDE 7282 | ELLINGSON ROUGHRIDER 4202  
EA QUEEN DOLLY 3246  
EA BELLS GIRL 7617 | KOUPAL ADVANCE 28  
EA BELLS GIRL 2181

Reg. #: 19811197  
BD: 3/4/20

CED	BW	WW	YW	SC	HP	MK	DOC	CW	MB	REA	\$W	\$F
14	-0.1	63	111	1.51	15.6	26	10	51	0.36	0.93	63	105

## B VERMILION RIVERSIDE

VERMILION BOMBER G017 | CASINO BOMBER N33  
VERMILION EDWINA 7078  
VERMILION EULIMA 0239 | VERMILION WANT TO  
VERMILION EULIMA 5281

Reg. #: 20352476  
BD: 1/22/22

CED	BW	WW	YW	SC	HP	MK	DOC	CW	MB	REA	\$W	\$F
5	1.3	107	176	0.85	10.3	13	21	85	0.29	0.95	87	126

## D SCHIEFELBEIN SHOWMAN 338

SCHIEFELBEIN ATTRACTIVE 4565 | JMB TRACTION 292  
FROSTY ANSWER 3979  
FROSTY ELBA 3745 | S A V RENOWN 3439  
FROSTY UPWARD 1100

Reg. #: 19260249  
BD: 1/29/18

CED	BW	WW	YW	SC	HP	MK	DOC	CW	MB	REA	\$W	\$F
7	0.5	79	152	1.07	12.6	27	27	67	0.29	1.07	70	121

## F STERLING PACIFIC 904

HOOVER NO DOUBT | MOGCK BULLSEYE  
MISS BLACKCAP ELLSTON J2  
BALDRIDGE ISABEL B082 | G A R PROPHET  
BALDRIDGE ISABEL Y69

Reg. #: 19444025  
BD: 2/13/19

CED	BW	WW	YW	SC	HP	MK	DOC	CW	MB	REA	\$W	\$F
4	2.1	78	140	1.12	12.2	7	31	69	1.40	0.68	51	119



**Smith Valley Gratitude**

# REFERENCE SIREs

## **G** KLA CHEROKEE 267

S A V REGARD 4863

S A V RESOURCE 1441  
S A V BLACKCAP MAY 5530

Reg. #: 20318456  
BD: 9/10/21

KLA FOREVER LADY 9K

S A V SOLID GOLD 9187  
SUNSET VALLEY FRVR LADY 8005

CED	BW	WW	YW	SC	HP	MK	DOC	CW	MB	REA	\$W	\$F
5	1.7	79	134	1.25	18.9	27	20	66	0.39	1.05	76	110

## **I** LAR MAN IN BLACK

BAR R JET BLACK 5063

CONNELLY BLACK GRANITE  
BAR R IRIS ANITA 0113

Reg. #: 19955191  
BD: 1/27/20

JMB MAXINE TG 2131

SITZ TOP GAME 561X  
JMB MAXINE DELUXE 9034

CED	BW	WW	YW	SC	HP	MK	DOC	CW	MB	REA	\$W	\$F
8	2.8	93	159	1.70	13.0	23	22	87	1.08	0.85	76	133

## **K** S A V GLORY DAYS 1832

S A V AMERICA 8018

S A V PRESIDENT 6847  
S A V MADAME PRIDE 0075

Reg. #: 20161297  
BD: 12/28/20

S A V MADAME PRIDE 3145

S A V PRIORITY 7283  
S A V MADAME PRIDE 1171

CED	BW	WW	YW	SC	HP	MK	DOC	CW	MB	REA	\$W	\$F
1	5.1	83	148	0.84	2.0	20	37	72	0.31	0.91	52	131

## **H** BROOKING BONAFIDE 9049

BROOKING FIREBRAND 6068

BROOKING BANK NOTE 4040  
BROOKING ANNIE K 390

Reg. #: 19743842  
BD: 1/15/19

BROOKING BEAUTY 333

S A V HARVESTOR 0338  
TLA BEAUTY 6R

CED	BW	WW	YW	SC	HP	MK	DOC	CW	MB	REA	\$W	\$F
-2	4.3	71	125	1.33	8.1	25	2	46	0.40	0.66	56	91

## **J** CONNEALY KING AIR 866I

NNEALY KING AIR

LD CAPITALIST 316  
PASHA OF CONANGA 557P

Reg. #: 20132605  
BD: 11/8/20

ERN LEN OF CONANGA 866I

CONNELLY LEGENDARY 644L  
NORTHERN LIZ OF CONANGA 7660

CED	BW	WW	YW	SC	HP	MK	DOC	CW	MB	REA	\$W	\$F
14	0.2	72	124	1.42	10.2	25	10	57	0.63	0.99	72	106



**KLA Cherokee 267**

---

---

---

---

---

---

---

---

---

---

---

---

---



**Thompson Angus**

# Thompson Angus

PETE & NANCY THOMPSON  
5323 26TH AVE. SE  
KINTYRE, ND 58549

# Thompson Angus

47th Annual Production Sale

2025  
Saturday,  
January 25

Selling:

76 AI-Sired Bulls  
Big, stout rancher bulls.  
Lunch will be served.

**DVAuction**  
Broadcasting Real-Time Auctions

